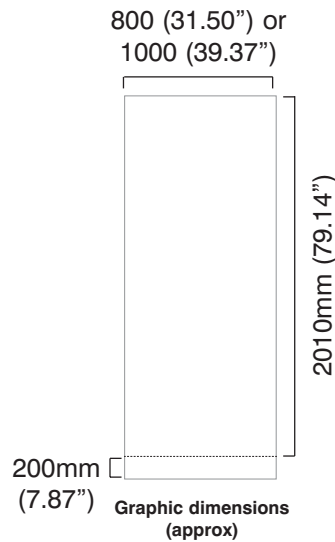




A lightweight economy roller banner with slim base and bungee pole making it very compact, complete with a twist out foot for extra stability.

**features & benefits**

- Lightweight components
- Re-usable quick-change snap top rail
- Hook/loop fastening quick change graphic application
- Twist out stabilising foot for extra stability
- Available in anodised silver
- 800mm and 1000mm graphic widths
- Includes quality padded carry bag



hardware specifications	graphic specifications	additional info
<p>800 Hardware Dimensions (mm): 2110 (h) x 830 (w) x 445 (d) approx. 83.10" (h) x 32.70" (w) x 17.52" approx. (Depth dimension refers to twist out foot)</p> <p>Weight: 2.5kg (5.5lbs) approx (including carry bag)</p>	<p>Visible Graphic Dimensions (mm): 2010 (h) x 800 or 1000 (w) approx 79.14" (h) x 31.50" or 39.37" (w) approx</p> <p>Substrate: Add 200mm (7.87") to base of graphic to allow for roller mechanism. Recommended material thickness 225 - 300 Microns (8.86 - 11.81 Mils)</p>	<p>Included in kit: Top rail, base, bungee pole set and carry bag</p> <p>Recommended accessories: AG720C Low profile hook fastener (25m roll)</p>

# Assembly Instructions

## Banner stand assembly



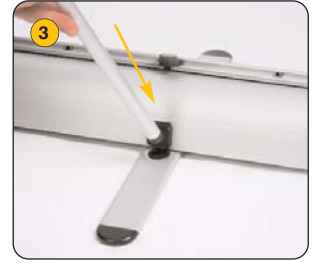
Kit includes: Top rail, base, bungee pole set and carry bag



1 Assemble the bungee pole set.



2 Open out the stabilising foot.



3 Fit the bungee pole into the stabilising foot.



4 Lift the top rail to raise the graphic from the base.



5 Lean the banner stand backwards and continue to extend the graphic.



6 Secure the top rail cup onto the bungee pole.

**Hold the Top rail whilst lowering the banner, (do not drop) to prevent damage to the graphic.**

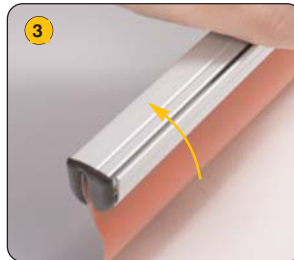
## Graphic attachment instructions



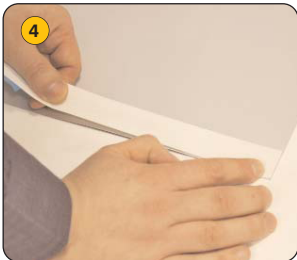
1 Rotate open the snap rail.



2 Slide the graphic squarely into the rail.



3 Squeeze the snap rail shut to secure the graphic into place



4 Align and adhere hook fastener squarely to the bottom shorter edge of the graphic. (attach to back of graphic)



5 Securely attach the graphic to the loop fastener on the banner leader strip.



6 Whilst holding the top rail remove the locking pin from the base and gently allow the graphic to retract.

**After fitting, the graphic should be left for 24 hours before use, to ensure the adhesive bonds sufficiently.**



**Note: Opening the banner stand base may invalidate the product warranty.**